

NITRO

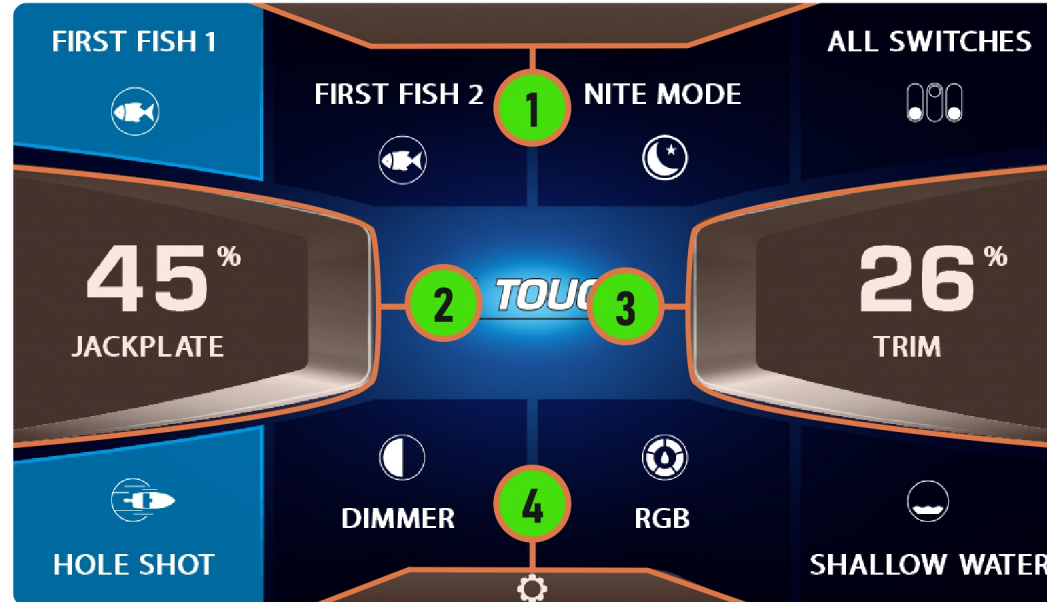
2024 2-TOUCH

USER GUIDE

HOME SCREEN



The home screen is a central location you can use to quickly toggle important vessel features on and off within one or two button presses.



FAULTS

1

If a fault occurs this bar will change from grey to orange and indicate that a fault is present. Press the bar for more information.

JACKPLATE

2

The jackplate level can be seen here. The jackplate can be calibrated. See Trim Calibration.

Z21XL, ZV20, ZV21 Only

TRIM

3

The trim level can be seen here. The trim can be calibrated. See Trim Calibration.

Z21XL, ZV20, ZV21 Only

SETTINGS

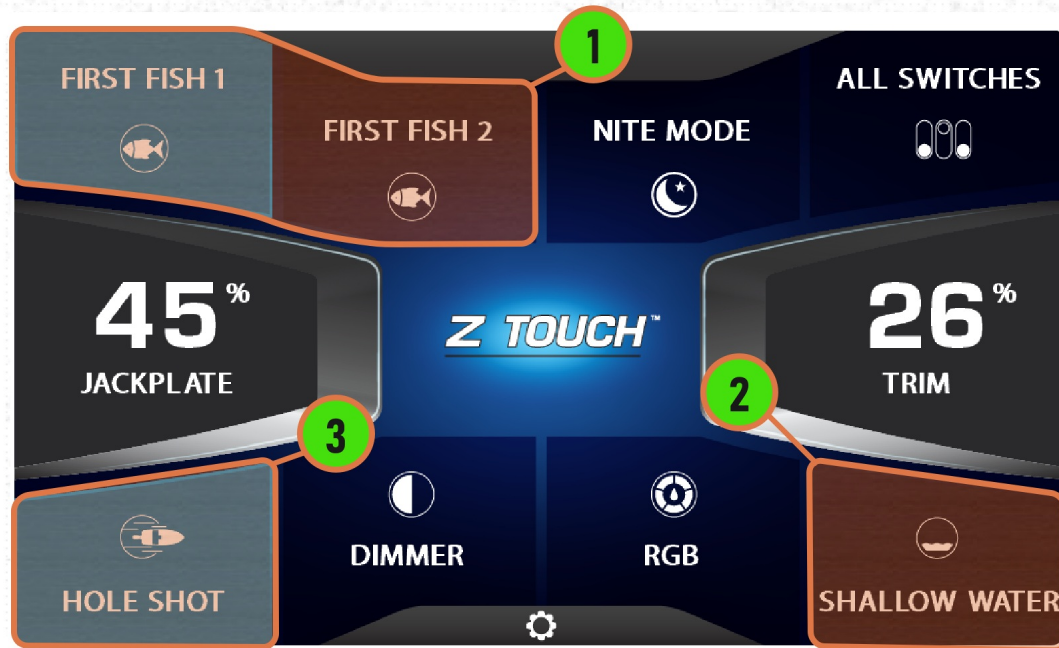
4

Press the gear icon to show several other settings for the vessel.

MODES

2

The modes page gives you control of various one touch features, providing quick control when you need it the most.



FIRST FISH

1

Pressing first fish will fill the selected livewell and begin recirculating with a single press.

SHALLOW WATER

2

With one press the Shallow Water button will set your jackplate and trim to a preset level allowing you to quickly adjust to changing water levels.

The feature is customizable and must be set up. To set up "Shallow Water" press the button and follow the on-screen prompts. These preset values can be changed at any time by pressing > ⚙ > user settings > Shallow Water.

Z21XL Only

HOLESHOT

Z21XL Only

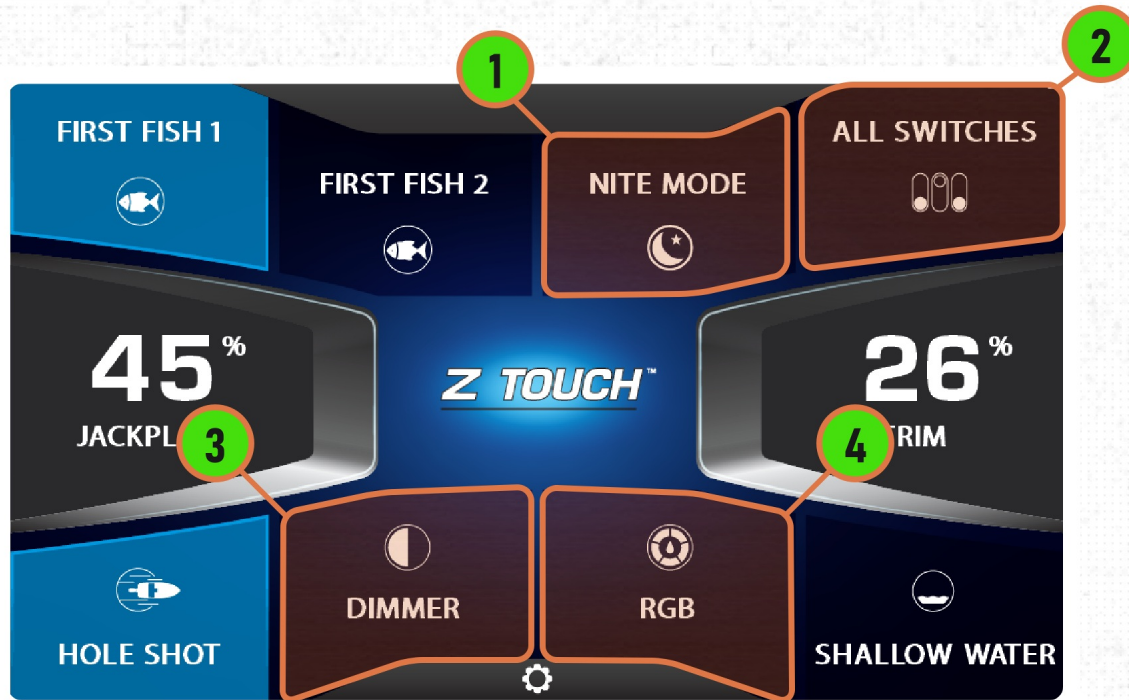
3

Pressing this will place the boat in holeshot mode allowing you to get out of the hole and on plane as fast as possible.

MODES

3

The modes page gives you control of various one touch features, providing quick control when you need it the most.



NITE MODE

When pressed the LCD display and gauges will dim, any RGB rope lighting will be set to white, and the NAV and Anchor lights will illuminate.

ALL SWITCHES

Pressing this will bring you to the all switches page. See the All Switches page for more info

DIMMER

Allows quick adjustment of the LCD backlight brightness. Adjustment for gauge brightness can be found here.

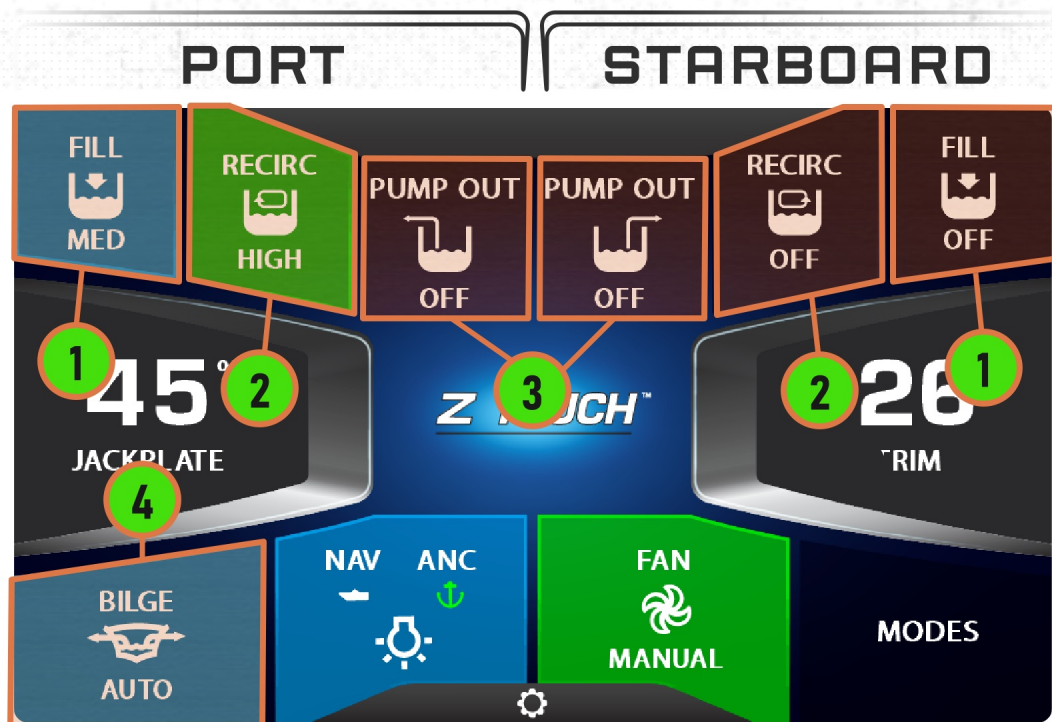
RGB [OPTIONAL]

If the vessel is equipped with RGB lighting press this button to change the color and brightness of the lights. Notes that these lights will automatically change to white when nite mode or the ignition are activated/present.

ALL SWITCHES

4

This page provides control of individual pumps as well as other systems like bilge and fan control.



LIVE WELL FILL

1

Located on either side of the LCD these fill buttons allow fill control for both the port and starboard live wells. Tap to cycle through off > low > med > high > off.

LIVE WELL RECIRC

2

These recirc buttons allow live well recirculation control for both the port and starboard live wells. Tap to cycle through off > low > med > high > off.

BILGE

4

Tap this to cycle the bilge pump between Off > Auto > Manual.

LIVE WELL PUMP OUT

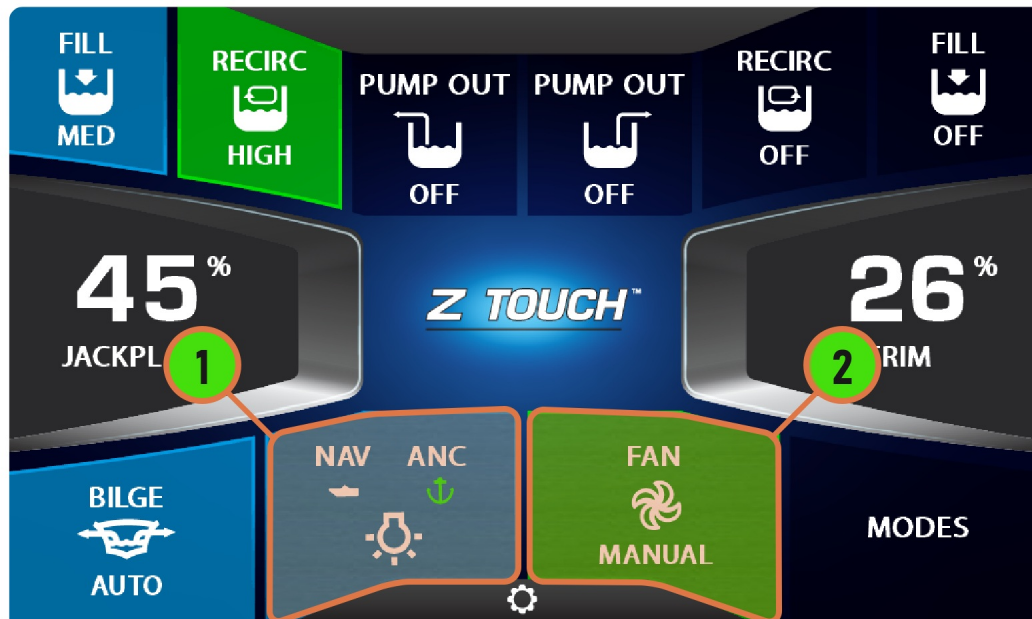
3

Press these to pump out the live well water.

ALL SWITCHES

5

This page provides control of individual pumps as well as other systems like bilge and fan control.



NAV / ANC LIGHTS

1

Tapping this button will cycle between Both Off > Nav/Anc (On) > Nav (Off) Anc (On) > Both Off.

FAN

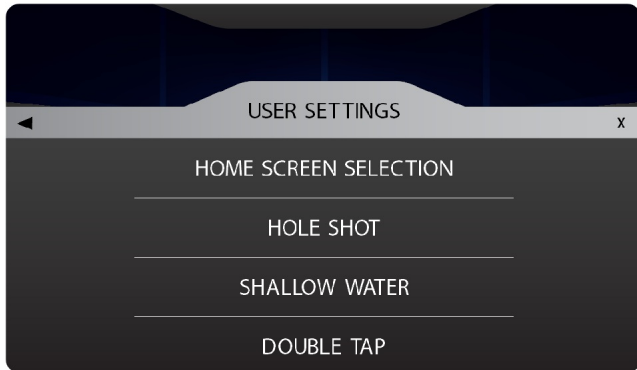
2

Tapping this button will cycle the fan between Off > Manual > Auto.

HOME SELECT

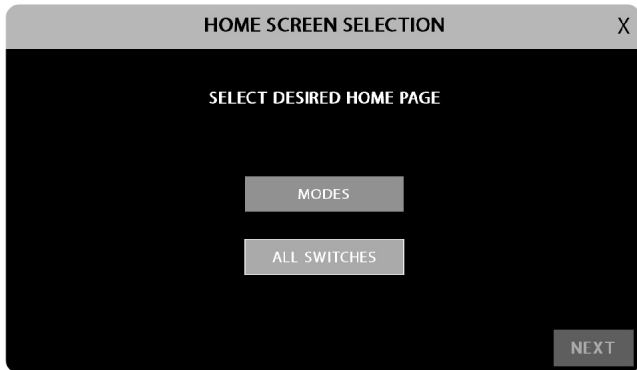
6

Adjusting this setting changes which screen the LCD defaults to after a specified period of time.



STEP 1: OPEN SETTINGS

To start press  > user settings > Home Screen Selection



STEP 2: SELECT DEFAULT

Select either Modes or All Switches. This will determine what page is considered your default home page.



STEP 3: DEFAULT TIME

Select how long it will take before the screen changes to the default page. You can also disable this by pressing "Time Out Off".

RGB/DIMMING

7

This page can be found by going to Modes > then selecting Dimmer or RGB if the vessel is equipped with RGB rope lighting.

i The ignition and nite mode must be off to adjust RGB color.

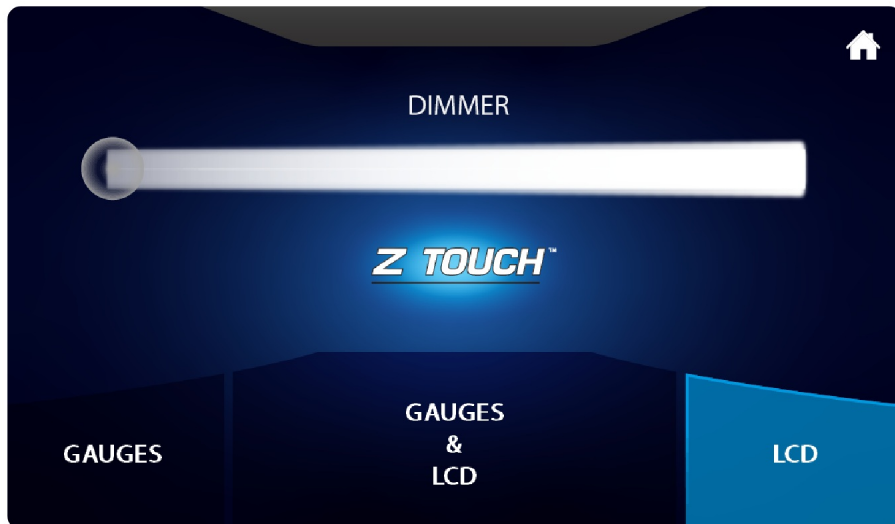


RGB LIGHTING

To toggle the RGB lights on and off use the power button.

To adjust RGB color drag the top circle slider to the desired color.

To adjust the RGB brightness drag the bottom circle slider to the desired brightness.



GAUGE & LCD DIMMER

Allows quick adjustment of the LCD backlight brightness. Adjustment for gauge brightness can be found here as well.


To adjust both gauge and LCD brightness press Gauges & LCDs

KEYFOB PAIRING

8

If the main LCD screen is replaced or reprogrammed the key fobs may need to be paired to the system again.

STEP 1: OPEN SETTINGS

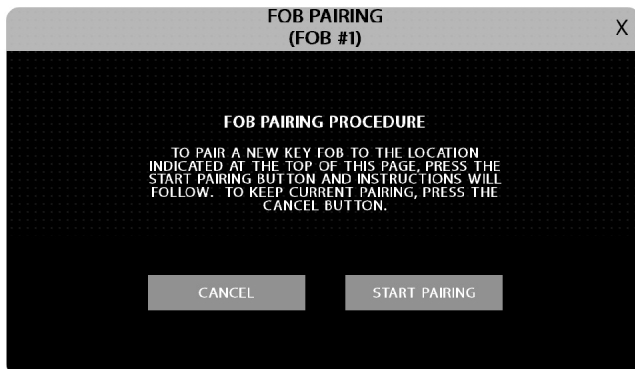
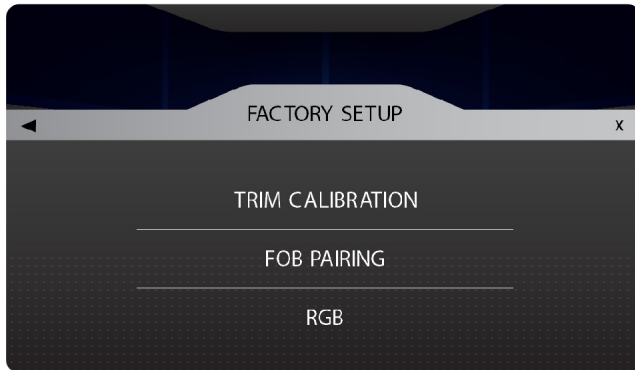
To start press  > user settings > Factory Setup then press "Fob Pairing"

STEP 2: SELECT KEYFOB

Select the key fob you would like to pair to the LCD. Up to two key fobs can be paired to the system.

STEP 3: PAIRING

Once you have selected the key fob you would like to pair follow the on-screen instructions to pair that key fob.




SERVICE AND FACTORY SETTINGS

TRIM CALIBRATION

10

The Trim and Jackplate are calibrated at the factory. Calibration should only be performed by a technician.

STEP 1: OPEN SETTINGS

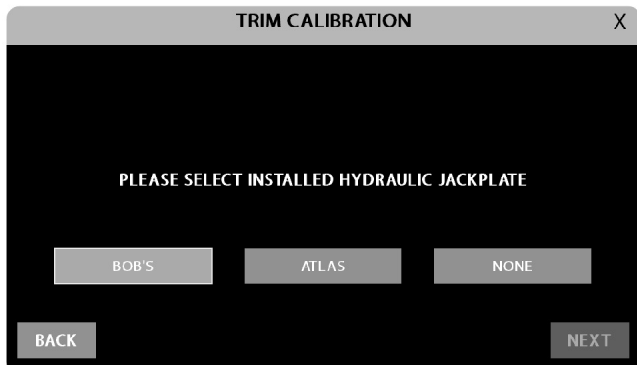
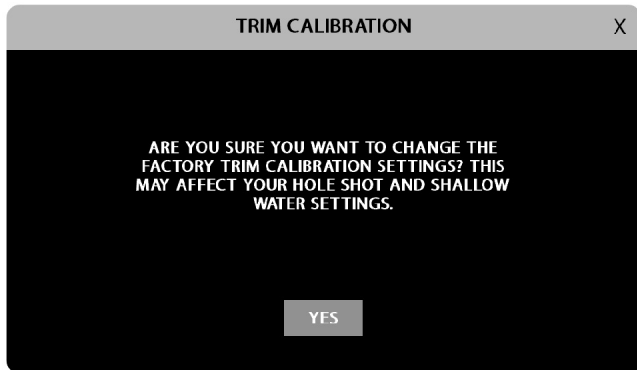
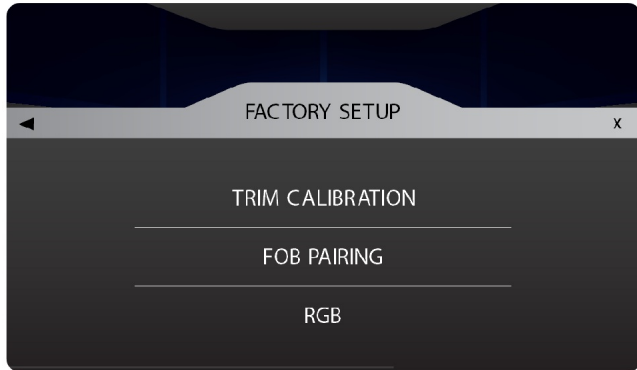
To start press  > user settings > Factory Setup the press "Trim Calibration".

STEP 2: CONFIRM

Confirm you would like to calibrate your trim and jackplate. Press the X icon if you do not want to do this.

STEP 3: CALIBRATION

Follow the on-screen prompts to complete the calibration procedure.




DIAG AND FAULTS

11

The diagnostics screen provides important module status information and config revisions. These are helpful during troubleshooting.

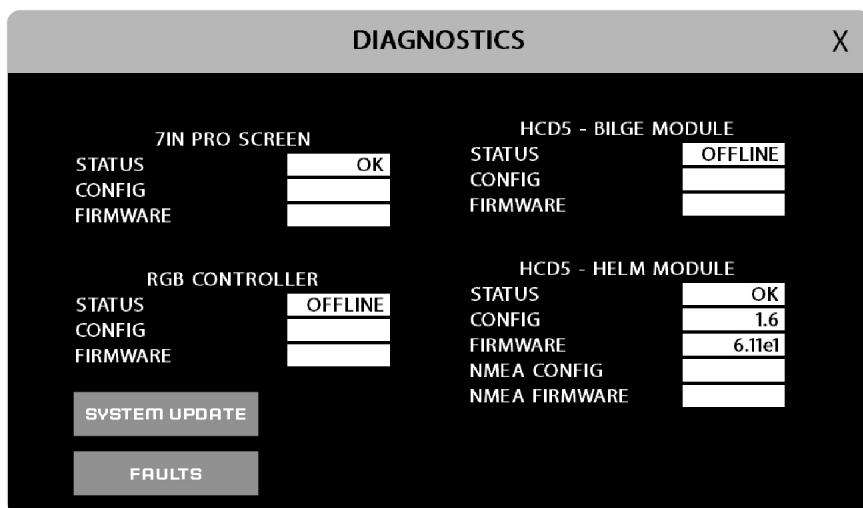


OPEN SETTINGS

To start press  > Diagnostics

VIEWING INFO

Each module in the network has a module status, config revision and firmware version. These are useful in determining if updates are required.



SYSTEM UPDATE

Pressing system update will scan the system to see if any module needs to be updated.

FAULTS

Pressing the faults button will display any active faults in the system.

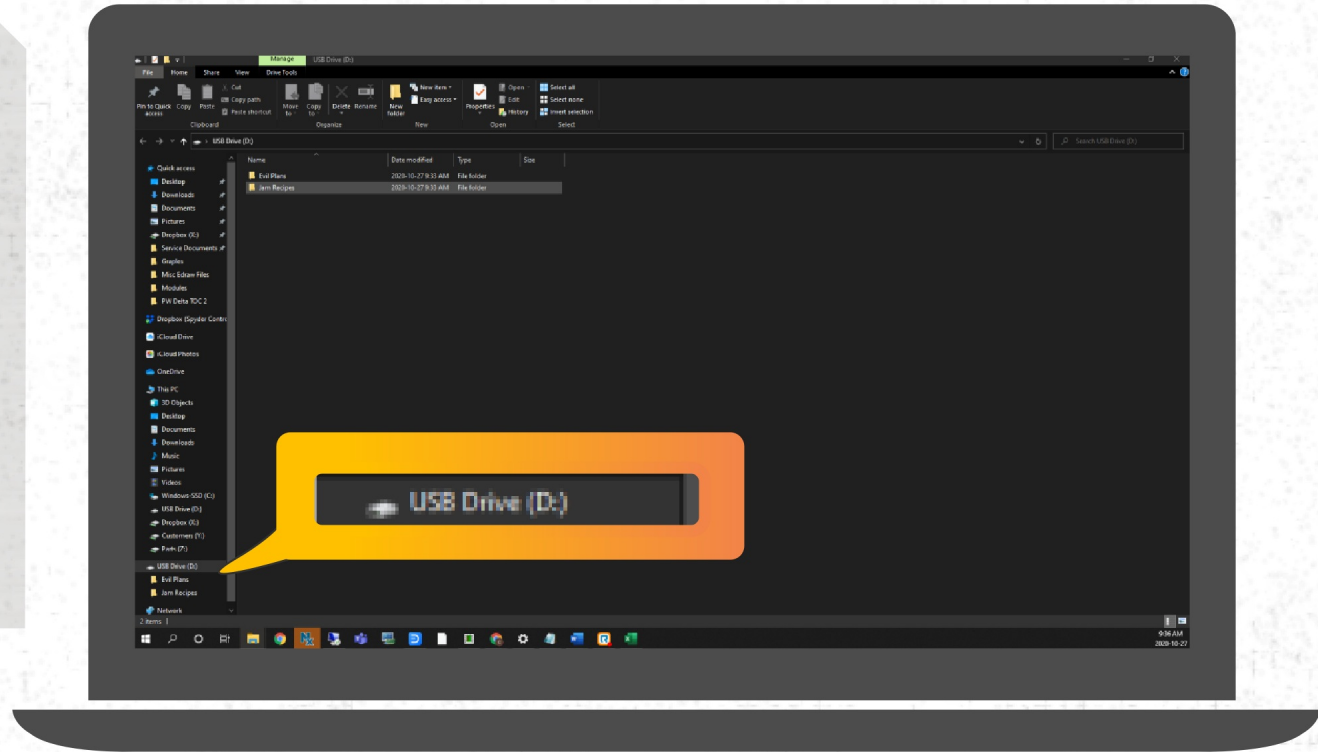
Step 1: Prepare your USB Stick

USB UPDATE

Plug a USB stick into your laptop or desktop computer.

Open the USB stick on your computer and ensure it meets the requirements defined below.

This may involve deleting and reformatting the USB stick before use.



USB STICK REQUIREMENTS

- 1) The USB stick used for uploading must have at least 1GB of storage capacity
- 2) The USB stick used for uploading must be no larger than 32GB
- 3) The USB stick must be formatted to FAT or FAT32

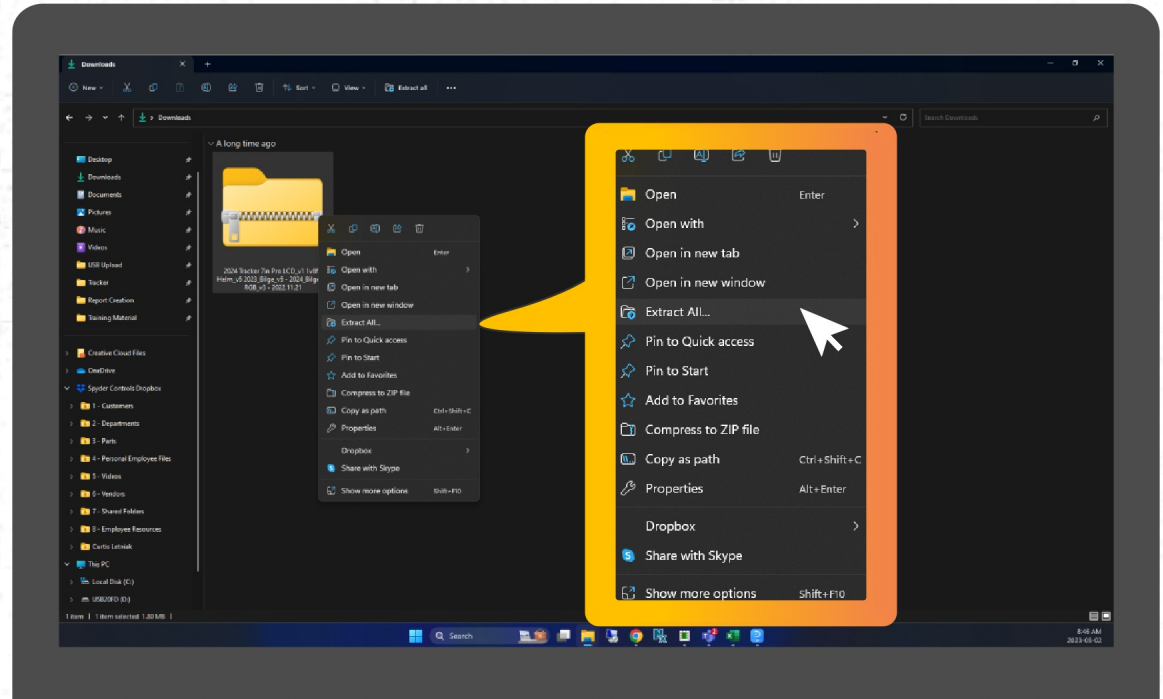
USB UPDATE

13

Step 2: Extract the files from the email.

EXTRACTING

- 1) Download the file sent to you by email.
- 2) Locate this folder in your downloads, right click and press extract.
- 3) The computer will ask you where you would like the folder extracted to.
- 4) Extract the folder to the USB stick.



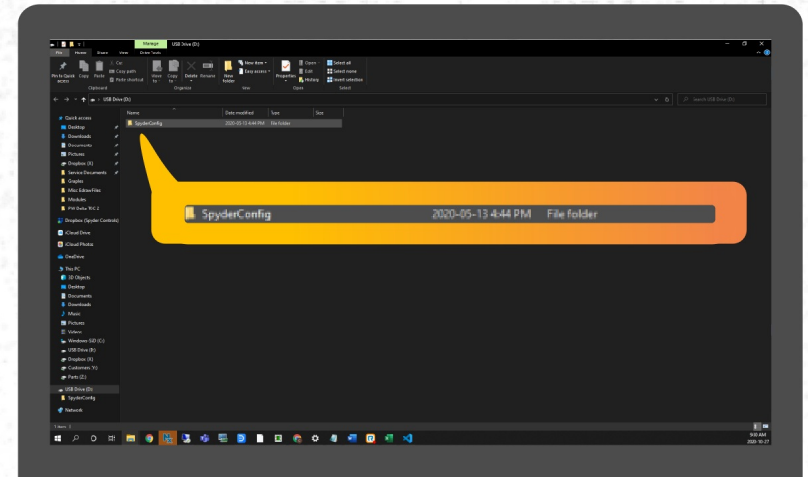
VERIFY FILES

- 5) Verify a folder called SpyderConfig is in your USB drive.
- 6) Remove the USB Stick.

For more help with extracting the USB files please watch our video tutorial

PC: <https://youtu.be/7n0vgP0buGA>

MAC: <https://youtu.be/5wBZ4EsSogM>



USB UPDATE

14

Step 3: Access the backside of the LCD



ACCESSING THE LCD

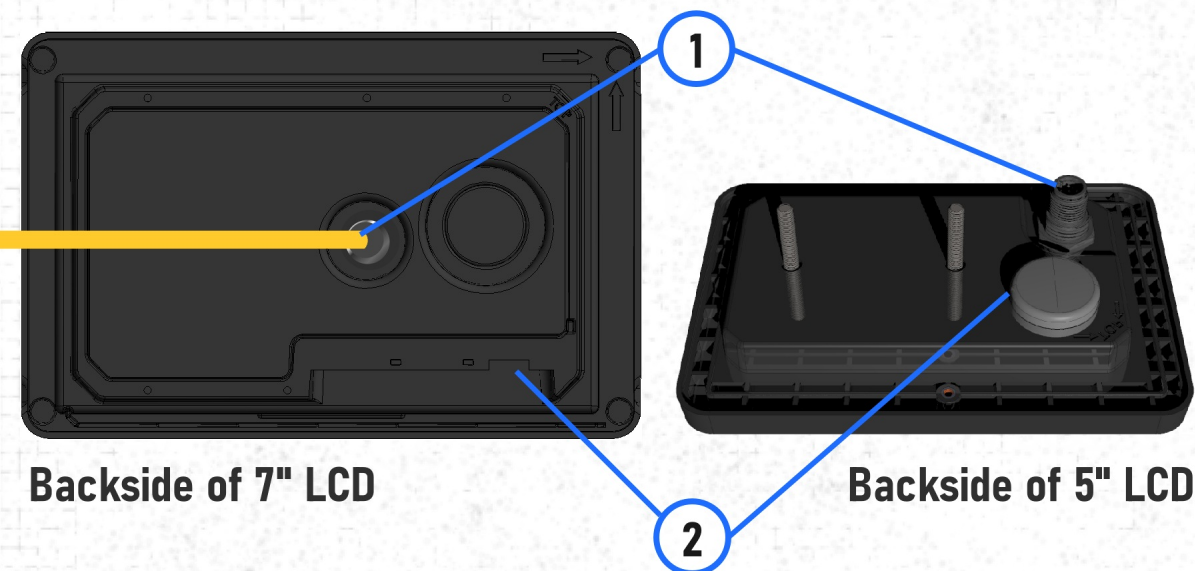
To update the system, we must access the back of the LCD.

The Z-Touch LCD is secured to the dash console with bolts on the backside.

Gain access to the backside of the LCD through the back of the console.

If you cannot gain access to the backside of the LCD please call Nitro.

Depending on your vessel you may have a 5" or 7" LCD.



POWERING DOWN THE LCD

Step 1: Unplug the network cable by unscrewing the network end.

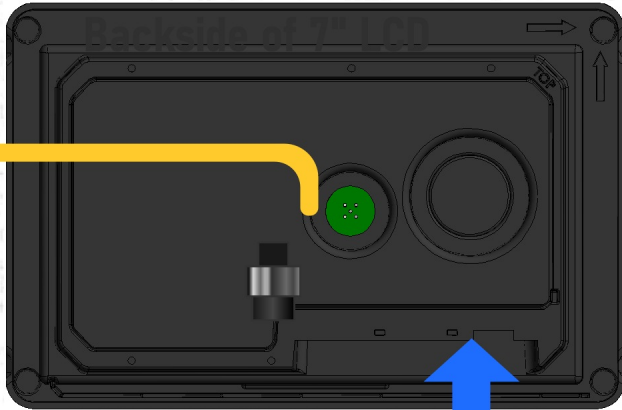
1

Step 2: Remove the rubber gromet.

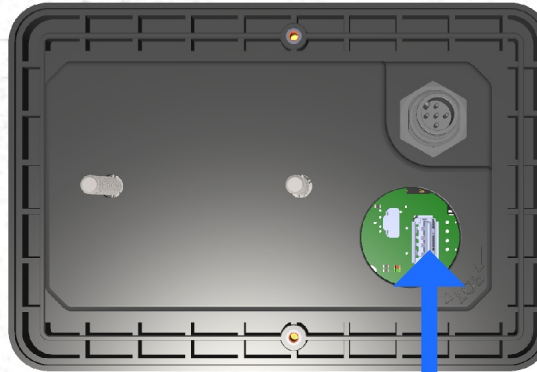
2

Step 4: Insert the USB stick into the LCD and connect the network cable to the LCD.

Backside of 7" LCD



Backside of 5" LCD



PLUGGING IN THE USB

Plug the USB stick into the USB port on the back of the LCD.

Ensure the network cable is unplugged.

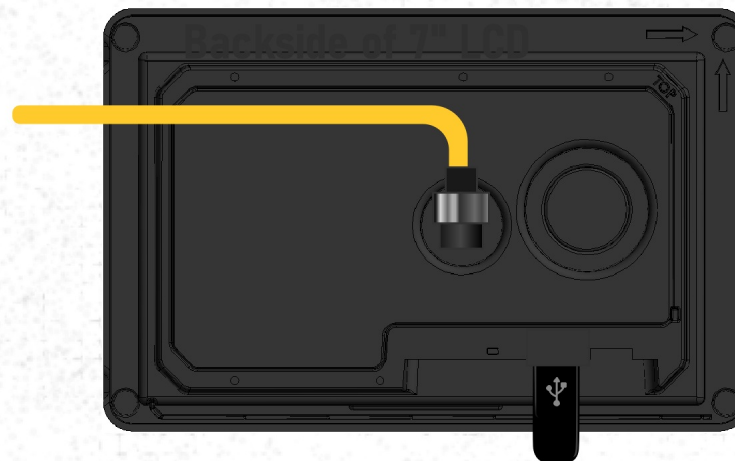


POWER THE LCD

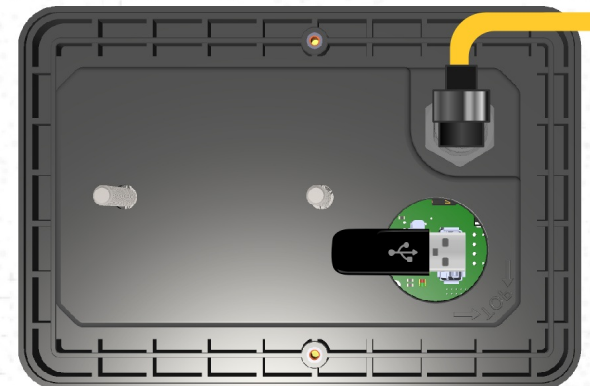
Plug the power cable back into the LCD and thread it down.

The screen will now load onto the USB.

Backside of 7" LCD



Backside of 5" LCD



Step 5: Update the LCD



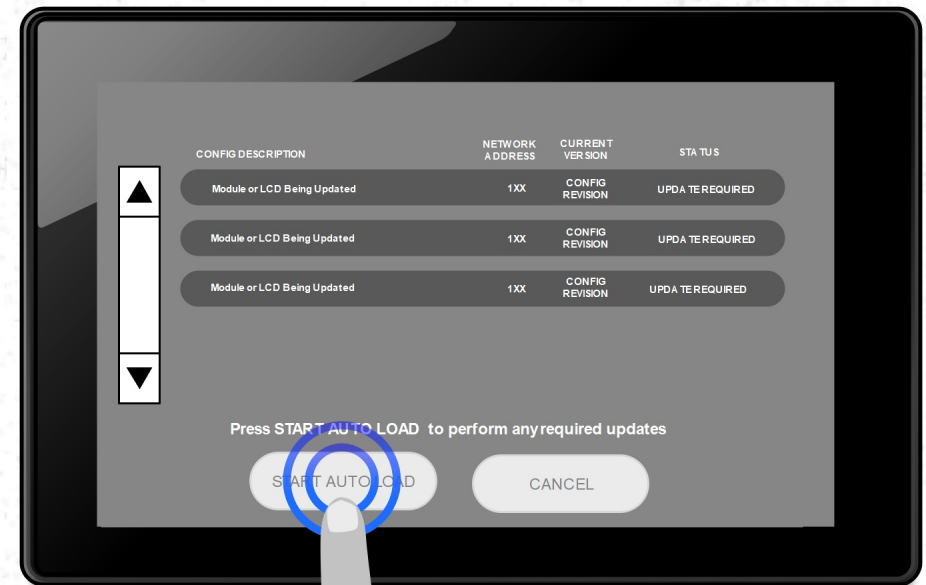
Frontside of LCD

START AUTO LOAD

Press "Start Auto Load"

SELECT AUTO LOAD

Press "Auto Load" in the bottom left hand corner to start the update.



Frontside of LCD

Step 6: Verification and Completion



Frontside of LCD

VERIFY SUCCESS

Verify that all the slots that previously said, "Update Required" now say "Update Successful."

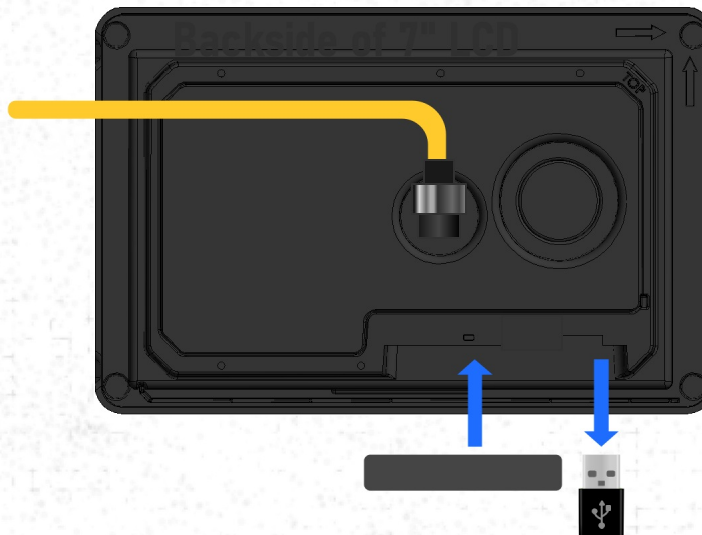
If the slot says "No Update Required" it does not need to be updated.

UNPLUG USB STICK

Unplug the USB stick and reinstall the rubber gromet.

The USB update is now complete, and the helm console can be reassembled.

Backside of 7" LCD



Backside of 5" LCD

